

SITE PHOTOGRAPHS

Viomec Farm (Pty) Ltd Proposed Expansion of a Chicken Layer Facility at Rooiwal (Grootvlei), Pretoria, Gauteng Province



Figure 1: Ablution facilities for workers



Figure 2: Existing Chicken House

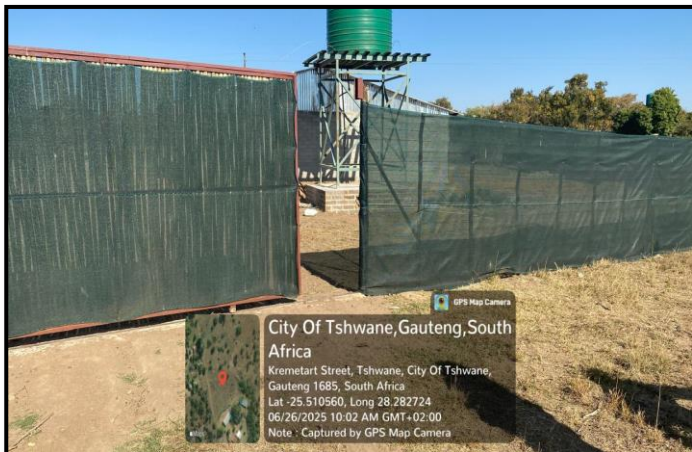


Figure 3: Existing Gate

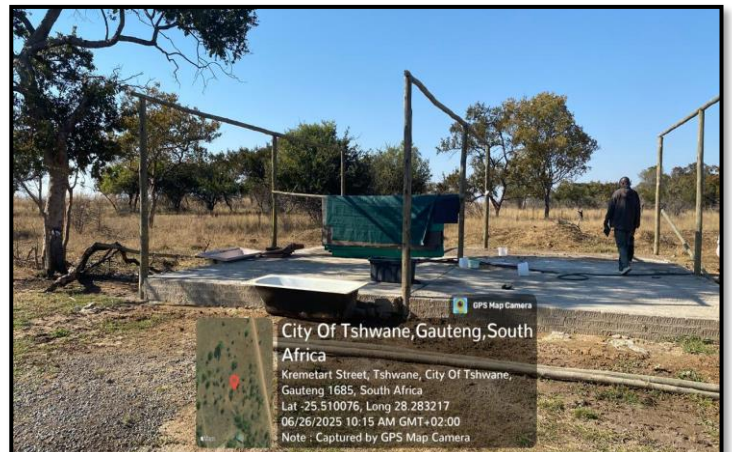


Figure 4: Drying Bed for Manure



Figure 5: Existing Gate

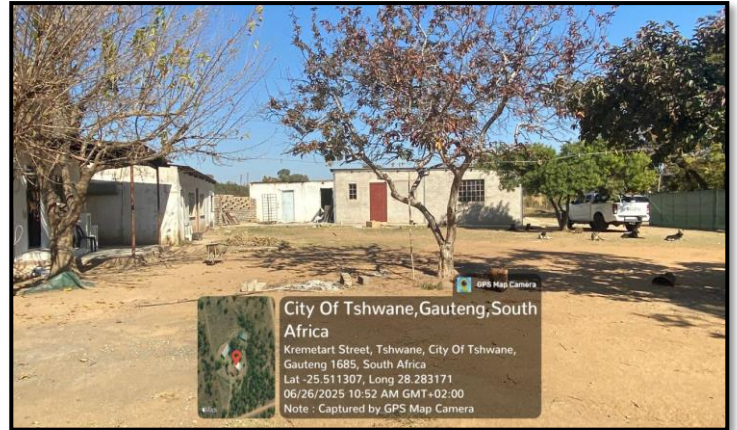


Figure 6: House for Workers



Figure 7: Packed dried manure



Figure 8: Existing Borehole Position



Figure 9: Office

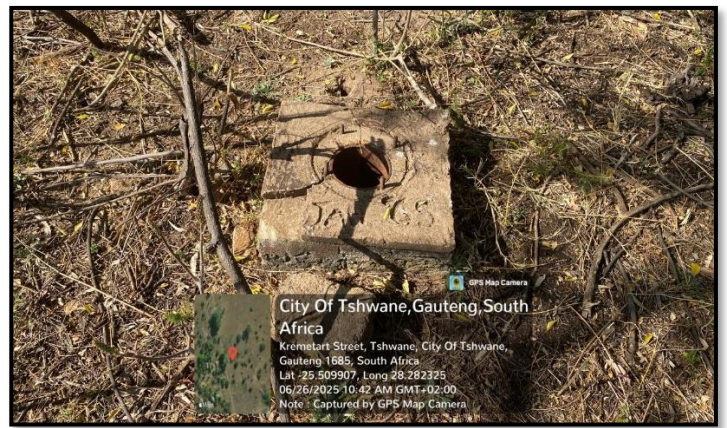


Figure 10: Old Borehole Structure



Figure 11: Pig house



Figure 12: Goats and Cattles House



Figure 13: Vegetable garden



Figure 14: Rainwater Storage

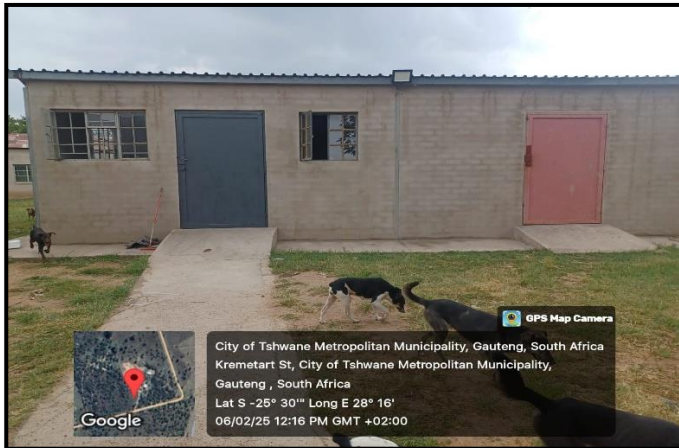


Figure 15: Male and Female Changing Rooms

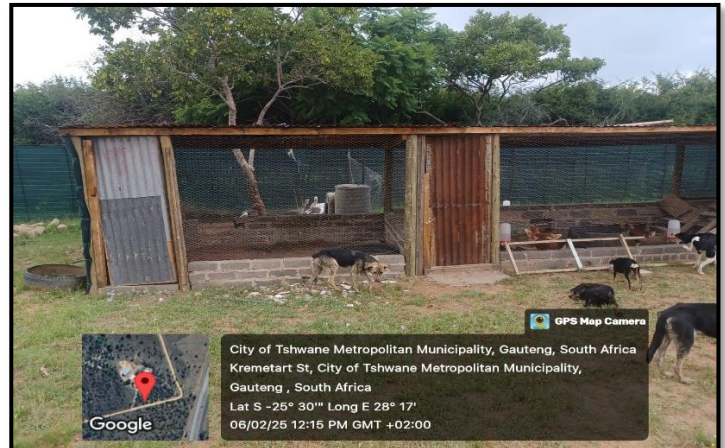


Figure 16: Duck house

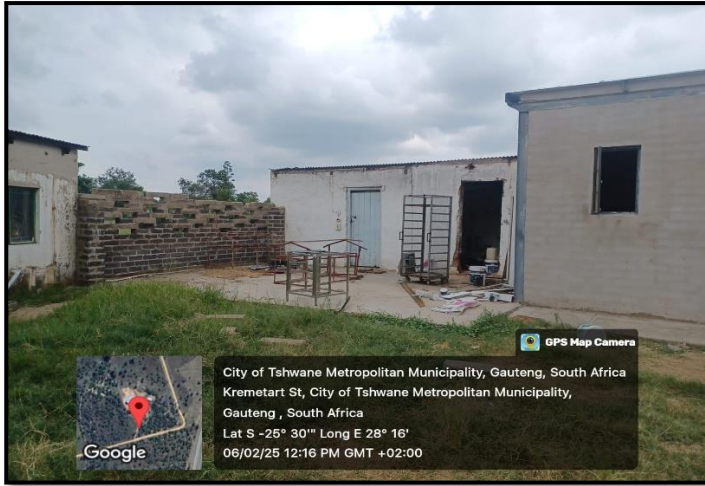


Figure 17: Existing Houses



Figure 18: Ablution Facilities



Figure 19: Existing Chicken House

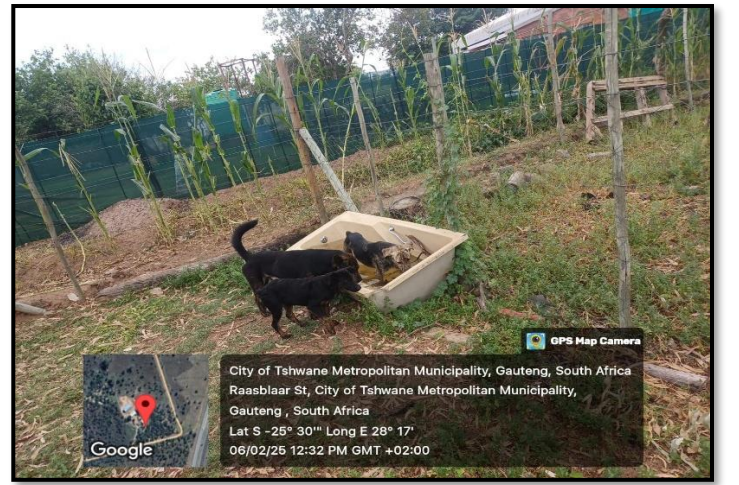


Figure 20: Dogs were observed on site



Figure 21: Kraal



Figure 22: Pig House



Figure 23: Existing Gate

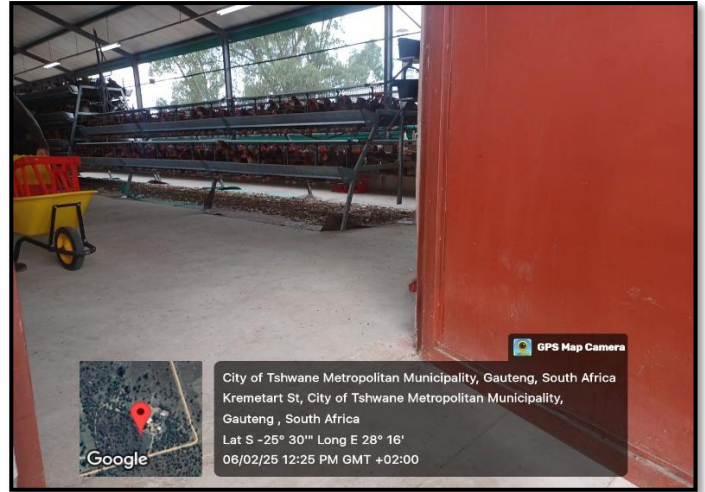


Figure 24: Existing Chicken House



Figure 25: Existing House

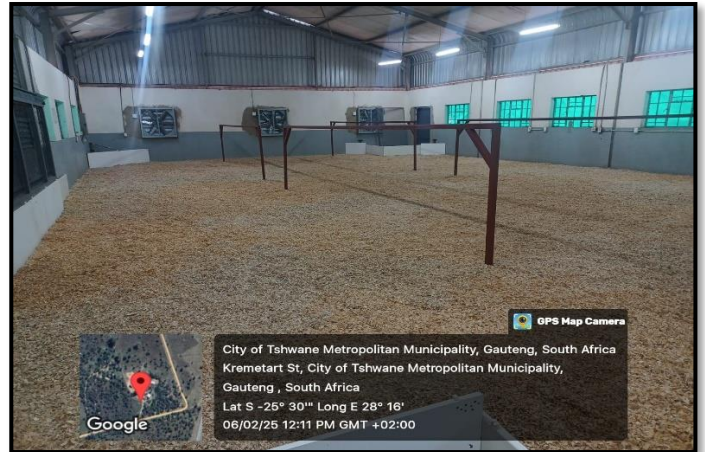


Figure 26: Rearing House



Figure 27: Rearing House